

Introduction to Gyeongsang National University



경상국립대학교
Gyeongsang National University



| Contents |

01 About GNU

**02 Exclusive Programs for
Exchange Students**

03 Attractions and Festivals of Jinju



About GNU



경상국립대학교
Gyeongsang National University

Location



About GNU



경상국립대학교

Gyeongsang National University

< Outline >

- Founded: 1948
- Type of University: National
- Organization: 5 campuses, 17 colleges, 11 graduate schools, 106 departments
- No. of Student: About 28,200
(Undergraduate 25,300, Graduate 2,900)
- Staff: 3,143
(faculty 2,488, Administration staff 655)

경상국립대학교

Gyeongsang National University

Introduction to Campuses



Colleges in GNU



College of Humanities



College of Social Sciences



College of Natural Sciences



College of Business Administration



College of Engineering



College of Agriculture and Life Sciences



College of Law



College of Education



College of Veterinary Medicine



College of Medicine



College of Nursing



College of Marine Sciences



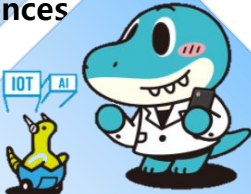
College of Pharmacy



College of Civil and Environmental Engineering



College of Convergence Technology and Engineering



College Affiliated with the Main Administration 1



College Affiliated with the Main Administration 2

Information of Dormitory

Providing a comfortable living environment

Dormitory expenses

(Currency: KRW, subject to change)

Classification	Old building(Double room)		New building(Double room)			Facilities
	5	7, Gaecheok	1BTL(8,9)	2BTL(10,11)	3BTL(1-4)	
Rate	555,750	569,790	582,660	643,500	685,620	Beds, desks, chairs, wardrobes, bookshelves, etc.

Meal Plan

(Currency: KRW, subject to change)

Classification	300 meals	230 meals	190 meals	150 meals	120 meals	Note
Average Daily	2.63	2.02	1.67	1.32	1.05	Cannot be changed after payment
Unit Cost	2,200	2,300	2,700	3,000	3,400	
Total	660,000	529,000	513,000	450,000	408,000	

Dormitory Facilities

Student dormitory interior, exterior and convenience facilities

Building 1-4(interior, exterior) Building 5 (interior, exterior) Building 6-7 (interior, exterior)



Dormitory Facilities

Student dormitory interior, exterior and convenience facilities

Building 8,9(interior, exterior)

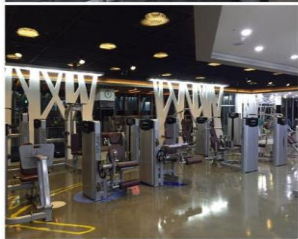
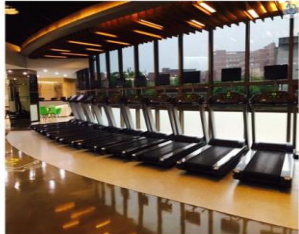
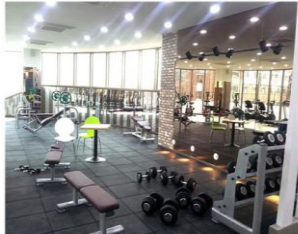
Dormitory view

Building 10,11(interior, exterior)



Dormitory Facilities

Student dormitory interior, exterior and convenience facilities



Gyeongsang National University Exclusive Programs for Exchange Students



경상국립대학교
Gyeongsang National University

GNU Buddy

1:1 matching between
International and Korean Student
Helping with adaptation to life in Korea

Free Korean Classes

Korean conversation, TOPIK, etc.
Free Korean lessons provided

Cultural Experiences

Experience Korean attractions and
culture in Jinju and nearby areas

ISA(International Student Association)

Cultural exchange among international
students from each country



경상국립대학교
Gyeongsang National University

GNU Buddy

One-to-one matching between foreign students and Korean students to help them adjust to life in Korea

- Support when Immigration and Dormitory check-in
- Help with course registration and adjustment to school life at the beginning of the semester
- Support for Korean language and department classes through continuous exchange with Korean students through 1:1 matching
- Participate in local and University festivals



Free Korean Classes

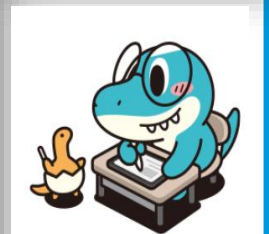
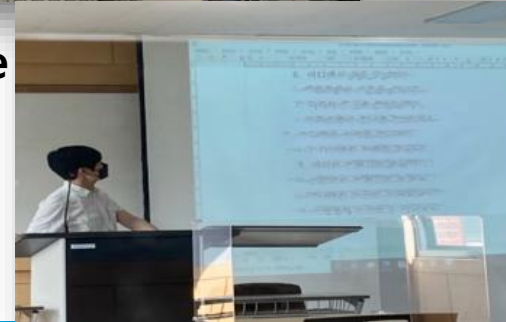
Free Classes for Korean Conversation and TOPIK

Purpose

- Korean conversation classes and TOPIK test preparation classes for foreign students
- Improve Korean conversational skills to increase academic achievement and support adaptation in Korea

Period and Benefits

- Period: 8~9 weeks <48-54 Hours>
- Completion criteria: **Issuance of a certificate** of attendance of **80% or more**
- Completion benefits: **Fee exempted**



Cultural Experience

Understanding Korean culture through cultural experiences at attractions near Jinju

Purpose

- Providing opportunities for cultural experience and enhancing understanding of Korea to enhance university life satisfaction

Summary for Program

- Period: During the semester (end of March - May / end of September - November)
- No. of Session: 2-3 times per semester (※ The number of sessions and schedule may change depending on the situation each semester)
- Others: When participating in cultural experience during the week, **it is approved for Official Absence Excuse**

Cultural Experience

Understanding Korean culture through cultural experiences at attractions near Jinju



Cultural Experience

Understanding Korean culture through cultural experiences at attractions near Jinju



ISA(International Student Association)

Cultural exchange among international students

- Operate ISA consisting of voluntary participation of international students from various countries
- Cooperate to help each other solve difficult parts of university life and adjust to Korea
- Cultural exchange with students other than students from various country



【2022 ISA Executives】

※ Consisting of International students from China, Pakistan, Indonesia, Vietnam, Uzbekistan, Mongolia, and India

JINJU

Introduction to Attractions and Festivals



경상국립대학교
Gyeongsang National University

Chokseokru (Jinjuseong)

GINU

It was built by King Gongmin of Goryeo (1365) and is one of the three great pavilions in Korea.



Namgang Yudeung Festival (Jinju)

GINU

Every October, festivals such as floating lanterns, flying wind lanterns, and fireworks are held around the Namgang River in Jinju.



GNU

THANK YOU!

